

ALL MATERIALS FALL WITHIN GRID AND CROP LINES

APL/APR SYSTEMS OVERVIEW

IGFM-17

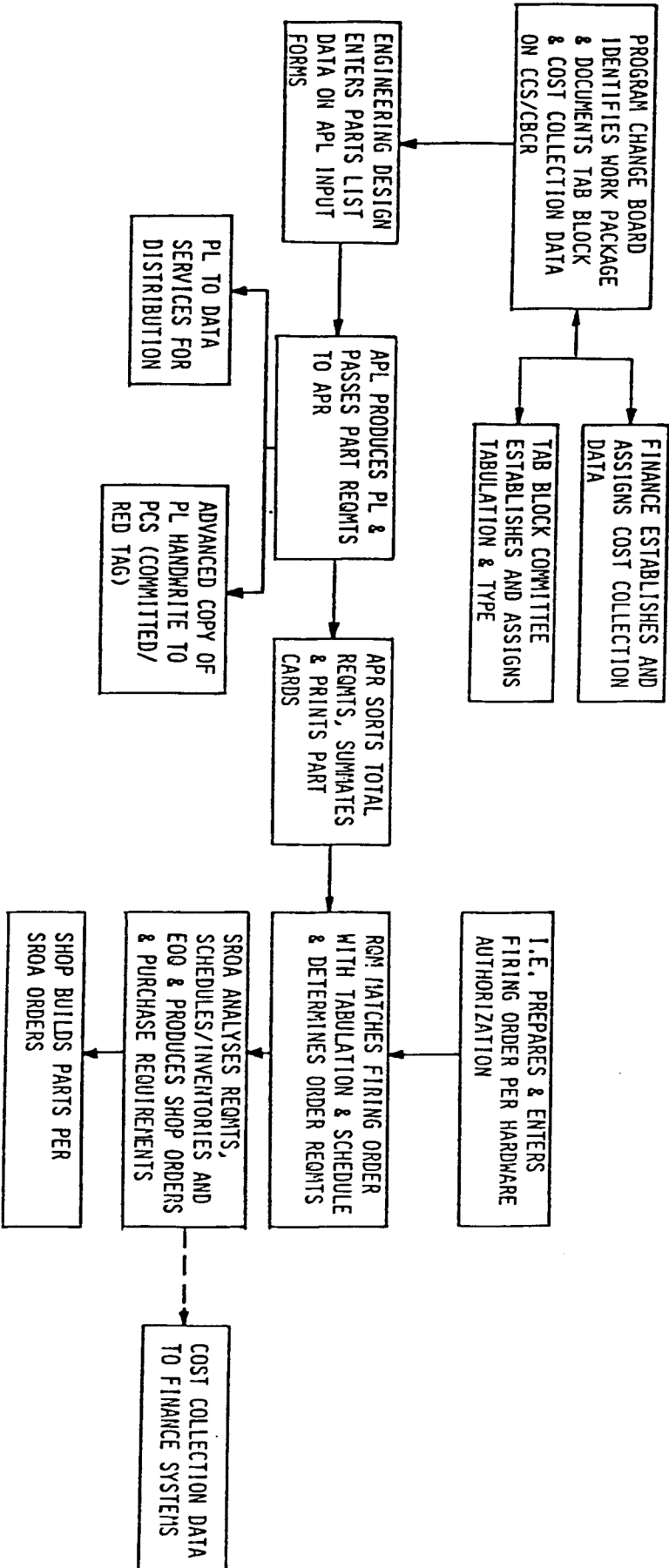
T

U

ACRONYMS

- APL - AUTOMATED PARTS LIST
- APR - AUTOMATED PARTS RELEASE
- SRDA - SCHEDULE, REQUIREMENTS, ORDER ANALYSIS
- RQM - REQUIREMENTS SYSTEM
- MSCS - MISCELLANEOUS SPARES CONTROL SYSTEM
- PCS - PRODUCTION CONTROL SERVICES
- OLP - ON-LINE PLANNING

REQUIREMENTS FUNCTIONAL FLOW



PROCEDURES/DOCUMENTS REQUIRED FOR APL PARTS LIST PREPARATION

- BDS 1042-3 -- AUTOMATED PARTS LIST, MILITARY PROGRAMS
- BDS 1070 -- ADVANCED DRAWING CHANGE NOTICE
- D3-11624-7 -- BOEING MILITARY AIRPLANE COMPANY APL/APR
PIN DEVELOPMENT
- D3-11624-500 -- BOEING MILITARY AIRPLANE COMPANY
ENGINEERING TABULATION BLOCK ASSIGNMENTS

**BOEING
DRAFTING STANDARD**

BDS-1042-3

BDS-1042-3

**AUTOMATED PARTS LIST
MILITARY PROGRAMS**

REV **H** **03-25-85**
LTN **DATE**

**TABLE OF CONTENTS
(SEE PAGES 2 & 3)**

**BOEING
DRAFTING STANDARD**

BDS-1070

BDS-1070

ADVANCE DRAWING CHANGE NOTICE

REV F 84-11-26
LTR DATE

TABLE OF CONTENTS

- 1 INTRODUCTION**
 - 1.1 General
 - 1.2 Purpose and Scope
 - 1.3 Format

- 2 IDENTIFICATION AND USAGE**
 - 2.1 ADCN Identification
 - 2.2 General Usage
 - 2.3 Limited Usage
 - 2.4 ADCN Incorporation Rules

- 3 PREPARATION REQUIREMENTS**
 - 3.1 General
 - 3.2 Preliminary Checks
 - 3.3 Completing the Form
 - 3.4 Standard Reasons
 - 3.5 Parts List Changes
 - 3.6 Application Block Changes
 - 3.7 Picture Changes
 - 3.8 Notes Changes

- 4 CANCELLATION/REPLACEMENT**
 - 4.1 General
 - 4.2 Cancelling ADCNs
 - 4.3 Replacing ADCNs

RELEASE

BOEING
FSCM NO. 82918

THIS DOCUMENT IS:

CONTROLLED BY

9570 - Finance Systems Compliance
ALL REVISIONS TO THIS DOCUMENT SHALL BE APPROVED
BY THE ABOVE ORGANIZATION PRIOR TO RELEASE

PREPARED UNDER

- CONTRACT NO.
- IR&D
- OTHER

DOCUMENT NO.

03-11624-7

MODEL

TITLE

Boeing Military Airplane Company APL/APR PIN
Development - Conversion

3.7 ENVIRONMENTAL CONTROL SYSTEMS UPDATE-ECP 1796

<u>WBS</u>	<u>ITEM</u>	<u>P.I.N.</u>	<u>M.O. CODE</u>	<u>NOMENCLATURE</u>
1.1	0011	0000-1100	BV	ACS GEN
1.2	0012	0000-1200	BV	CTCS
1.3	0013	0000-1300	BV	MCS
9.0	0090	0000-9000	BV	Support Equipment
12.0	0120	0001-2000	BV	EMC TEST

THIS DOCUMENT IS:

CONTROLLED BY
 4341 - PRODUCTION CONTROL SYSTEMS AND SERVICES
 ALL REVISIONS TO THIS DOCUMENT SHALL BE APPROVED
 BY THE ABOVE ORGANIZATION PRIOR TO RELEASE.

PREPARED UNDER CONTRACT NO.

IR&D

OTHER

DOCUMENT NO. D3-11624-500 MODEL

TITLE BOEING MILITARY AIRPLANE COMPANY
 ENGINEERING TABULATION BLOCK ASSIGNMENTS

ECP 1761	E1761	20 MM GUN LINKLESS FEED SYSTEM (LFS PROTOTYPE)		MSCS
ECP 1795/B-52G /B-52H	E1795 "	PNEUMATIC SYSTEMS PRE-COOLER TEMP CONTROL UPDATE SYSTEM	L0101-L0273 L0301-L0396	BW BW FIRING ORDER
ECP 1796/B-52G /B-52H	E1796 "	ENVIRONMENTAL CONTROL SYSTEMS UPDATE	L0101-L0273 L0301-L0396	BV BV FIRING ORDER FIRING ORDER
ECP 1801	E1801	B52/ALQ-117 PAVE MINT	L0101-L0273	CC FIRING ORDER

- APL SYSTEM PROVIDES
 - A MULTI-MODEL DATA FILE
 - ASSEMBLY/INSTALLATION CREATE
 - AUTOMATIC ADCN INCORPORATION
 - IMPOSED DATA CONTROLS BY STRUCTURED INPUT
 - SORTED OUTPUT
 - EXTRACTS (CANNED/UNIVERSAL FORMATS)
 - ERROR AND EXCEPTION REPORTS
 - ACCEPTANCE REPORTS AND DISTRIBUTION DATA
 - MACHINE GENERATED PLS (FICHE/HARDCOPY)
 - HISTORICAL DATA

- APR SYSTEM PROVIDES
 - MODEL UNIQUE DATA FILES
 - LOAD OF PARTS LIST/LIST OF MATERIAL DATA
 - PART FICHE, PART CARDS, ENGINEERING ASSEMBLY LIST
 - EXTRACTS (CANNED/UNIVERSAL FORMAT)
 - INDENTURED PARTS LIST (IPL)
- UPDATE OF APL MASTERFILE APPLICATION LIST RECORDS
- ERROR AND EXCEPTION REPORTS

BOEING MILITARY AIRPLANE COMPANY

**PARTS LIST PRINTOUT
FORMAT**



HEADER DATA

- ① DRAWING NUMBER
- ② CONTRACT NUMBER
- ③ TITLE
- ④ GROUP NAME
- ⑤ FSCM NUMBER
- ⑥ PIN NUMBER (RELATES TO WBS, ITEM)
- ⑦ MODEL
- ⑧ LATEST REVISION DATE
- ⑨ REVISION LEVEL

AUTOMATED

MODEL C-135		7		PIN 0004-0500		6	1		9	
PARTS LIST		BOEING		MILITARY AIRPLANE COMPANY A UNIT OF THE BOEING COMPANY 11000 WASHINGTON AVENUE MOUNTAIN VIEW, MISSOURI 64061		FSCM 422100	5	8	PL 35-33178	REV LTR C
TITLE		SPlice INSTL-INSPAR WING, BBL 70.50 MOD		3		GROUP	4	CONTRACT NUMBER	2	SH 1 OF 152 SH
PART NO.	NEXT ASSEMBLY	MODEL	SERIAL NUMBER	APPLICATION LIST						
-1	35-33112	C-135	ECP0405	<p>K0078-K0078, K0226-K0226, K0233-K0234, K0931-K0933, K0940-K0940, K0940-K0943, SUB K0078-K0078, K0075-K0077, K0079-K0101, K0105-K0133, K0135-K0206, SUB K0208-K0225, K0227-K0232, K0235-K0333, K0335-K0338, K0340-K0383, SUB K0385-K0469, K0472-K0475, K0477-K0481, K0483-K0494, K0496-K0522, SUB K0524-K0706, K0708-K0732, K0741-K0759, K0761-K0766, SUB K0801-K0817, K0901-K0910, K0918-K0920, K0934-K0939, K0941-K0941, SUITABLE FOR 56-3639, 58-011, 58-018, 56-019, 56-3632 THRU 56-3634, 56-3636 THRU 56-3638, 56-3640 THRU 57-1421, 57-1425 THRU 57-1453, 57-1455 THRU 57-2600, 57-2602 THRU 58-010, 58-012 THRU 58-017, 58-020 THRU 58-118, 58-130 THRU 58-123, 58-125 THRU 59-1480, 59-1482 THRU 60-355, 60-358 THRU 60-343, 60-343 THRU 60-367, 61-221 THRU 61-272, 61-274 THRU 61-300, 61-302 THRU 61-323, 62-3497 THRU 62-3580, 63-7978 THRU 63-8045, 63-8871 THRU 63-8873, 63-8877 THRU 63-8886, 64-14828 THRU 64-14840, 60-369 THRU 60-377, 61-326 THRU 61-330, 63-8058 THRU 63-8061, SUITABLE FOR 62-4125 THRU 62-4127, 62-4134, 62-4138, 62-4139, 62-3581 THRU 62-3585, 63-8056 THRU 63-8057, 63-9792, 64-14841 THRU 64-14849, 61-2662 THRU 61-2664, 62-4128 THRU 62-4133, 62-4135, DRAWING PICTURE SHEET 2 AND 3.</p>						
-10	35-33978	C-135	C-135	<p>DETAIL PART - SERIALIZATION NOT SHOWN. SUITABLE FOR 55-3118 THRU 55-3132, 55-3134 THRU 55-3135, 55-3137, 55-3139, 55-3141 THRU 55-3142, 55-3145 THRU 56-3601, 56-3603 THRU 56-3632, 60-356, 60-357, 60-362, SUITABLE FOR 55-3137, 55-3139, 55-3142, 55-3145, 56-3592, 56-3601, 56-3632 THRU 56-3638, 56-3640 THRU 57-1425, 57-1425 THRU 58-010, 58-012 THRU 58-017, 58-020 THRU 60-367, 61-261 THRU 61-272, 61-274 THRU 61-300, 61-302 THRU 61-323, 62-3497 THRU 62-3586, 63-7978 THRU 63-8045, 63-8871 THRU 63-8886, 64-14828 THRU 64-14828, 60-369 THRU 60-376, 61-326 THRU 61-330, 63-8058 THRU 63-8061, 63-8470 THRU 63-8472, 63-8474, 63-8475, 63-12735 THRU</p>						

61003-3 (13)

DEFINITIONS

APPLICATION LIST

- INDEX OF REQUIRED INFORMATION AND ITS APPLICATION TO NEXT HIGHER ASSEMBLY DRAWINGS
- ESTABLISHES PART REQUIREMENTS AND DRIVES THAT REQUIREMENTS TO MANUFACTURING SYSTEMS VIA APL/APR SYSTEMS

APPLICATION LIST

- ① PRIME DASH NUMBER
- ② NEXT ASSY
- ③ MODEL
- ④ EFFECTIVITY
- ⑤ SUITABILITY

AUTOMATED

MODEL C-133

PN 0004-0500

PARTS LIST		BOEING		MILITARY AIRPLANE COMPANY		A DIVISION OF THE BOEING CORPORATION		REV. LTR	
TITLE		SPlice INSTL-INSPAR WING, DBL 70.50 MOD		UNIT 3, FIVEHILL		REV. 1114, MAR 1971		REV. C	
				FSCM		PL 35-33178		REV. LTR	
				H2D10		83-04-19		C	
				GROUP		CONTRACT NUMBER		SH 1 OF	
				STRUCTURE		F34601-74-C-3023		152 SH	

APPLICATION LIST

PART NO.	NEXT ASSEMBLY	MODEL	SERIAL NUMBER	REV SYM
(1)	(2)	(3)	(4)	
-1	35-33112	C-133	ECP0405	
		C-133	K0070-K0078, K0226-K0226, K0235-K0234, K0931-K0933, K0940-K0940, K0944-K0945,	
		C-133	SUB K0071-K0073, K0075-K0077, K0079-K0101, K0105-K0133, K0135-K0206,	
		C-133	SUB K0208-K0225, K0227-K0232, K0235-K0333, K0335-K0338, K0340-K0383,	
		C-133	SUB K0385-K0469, K0472-K0475, K0477-K0481, K0483-K0494, K0496-K0522,	
		C-133	SUB K0524-K0706, K0708-K0732, K0741-K0749, K0751-K0755, K0761-K0764,	
		C-133	SUB K0801-K0817, K0901-K0910, K0918-K0920, K0931-K0939, K0941-K0941,	
		C-133	SUITABLE FOR 56-1619, 58-011, 58-018,	
			58-019, 56-1632 THRU 56-3634, 56-3636 THRU	
			56-3638, 56-3640 THRU 57-1421, 57-1425	
			THRU 57-1433, 57-1435 THRU 57-2600,	
			57-2602 THRU 58-010, 58-012 THRU 58-017,	
			58-020 THRU 58-118, 58-120 THRU 58-123,	
			58-125 THRU 59-1480, 59-1482 THRU 60-355,	
			60-358 THRU 60-361, 60-363 THRU 60-367,	
			61-261 THRU 61-272, 61-274 THRU 61-300,	
			61-302 THRU 61-325, 62-1497 THRU 62-3580,	
			63-7976 THRU 63-8045, 63-8071 THRU	
			63-8075, 63-8077 THRU 63-8088, 64-14828	
			THRU 64-14840, 60-369 THRU 60-377, 61-326	
			THRU 61-330, 63-8028 THRU 63-8061,	
			SUITABLE FOR 62-4125 THRU 62-4127,	
			62-4134, 62-4138, 62-4139, 62-3581 THRU	
			62-3585, 63-8046 THRU 63-8057, 63-8792,	
			64-14841 THRU 64-14849, 61-2662 THRU	
			61-2664, 62-4128 THRU 62-4133, 62-4135,	
			DRAWING PICTURE SHEET 2 AND 3	
			DETAIL PART - SERIALIZATION NOT SHOWN.	
			SUITABLE FOR 55-3116 THRU 55-3132, 55-3134	
			THRU 55-3135, 55-3137, 55-3139, 55-3141	
			THRU 55-3142, 55-3145 THRU 56-1601,	
			56-1603 THRU 56-1632, 60-356, 60-357,	
			60-362,	
			SUITABLE FOR 55-3137, 55-3139, 55-3142,	
			55-3145, 56-1632, 56-1634 THRU	
			56-1638, 56-1640 THRU 57-1423, 57-1425	
			THRU 58-010, 58-012 THRU 58-017, 58-020	
			THRU 60-367, 61-261 THRU 61-272, 61-274	
			THRU 61-300, 61-302 THRU 61-325, 62-3497	
			THRU 62-3580, 63-7976 THRU 63-8045,	
			63-8071 THRU 63-8088, 64-14828 THRU	
			64-14840, 60-369 THRU 60-377, 61-326 THRU	
			61-330, 63-8028 THRU 63-8061, 63-8070 THRU	
			63-8072, 63-8074, 63-8075, 63-12735 THRU	
-10	35-33978	C-133		
		C-133		
		C-133		
		C-133		

61003-116

BOEING MILITARY AIRPLANE COMPANY

DESCRIPTION OF CHANGE

AUTOMATED

PARTS LIST		BOEING		MILITARY AIRPLANE COMPANY A DIVISION OF THE BOEING COMPANY 3815 E. CLEVELAND AVENUE, WICHITA, KANSAS 67218		PSGN	REV DATE	PL	REV LTR
LIST TITLE	SPLICE INSTL-INSPAR WING, DBL 70.50 MOD	82918	83-08-19	35-33178	C	GROUP	CONTRACT NUMBER	SH	OF
		STRUCTURE	F34601-74-C-3023	152	SH				

APPLICATION LIST

PART NO. NEXT ASSEMBLY MODEL SERIAL NUMBER

REV
SYM

-9 35-33978 C-135

57-1422, 57-1423, 57-1454, 57-2601,
58-119, 59-1481, 63-8876, 60-378.

C-135
C-135
DETAIL PART - SERIALIZATION NOT SHOWN.
SUITABLE FOR 55-3137, 55-3139, 55-3142,
55-3145, 56-3592, 56-3601, 56-3632 THRU
56-3638, 56-3640 THRU 57-1423, 57-1425
THRU 58-010, 58-012 THRU 58-017, 58-020
THRU 60-167, 61-261 THRU 61-272, 61-274
THRU 61-300, 61-302 THRU 61-325, 62-3497
THRU 62-3530, 63-7976 THRU 63-8065,
63-8871 THRU 63-8888, 64-14828 THRU
64-14829, 60-369 THRU 60-378, 61-326 THRU
61-330, 63-8058 THRU 63-8061, 63-8490 THRU
63-8492, 63-8494, 63-8495, 63-12735 THRU
63-12740, 62-3581 THRU 62-3585, 63-8045
THRU 63-8057, 63-9792, 64-14541 THRU
64-14649, 61-2662 THRU 61-2674, 62-4128
THRU 62-4133, 62-4135.
SUITABLE FOR 55-3118 THRU 55-3132, 55-3134
THRU 55-3135, 55-3137, 55-3139, 55-1141
THRU 55-3142, 55-3145 THRU 56-3601,
56-3603 THRU 56-3632, 60-356, 60-357,
60-362.

REVISIONS

REV SYM	DESCRIPTION OF CHANGE	DATE	CLASS	CHG CONTROL NUMBER
A	DCN CHANGES - APL ANALYST INITIATED CHANGE REVISED MF NOTES ON PART NUMBERS -18, -35, -36, -545 THRU -550, -563, -564, -569, -575 THRU -577, -63 AND -64. REVISED EN NOTES FOR 35-33182-13 THRU 35-33182-18, REVISED NOMENCLATURE FOR 35-33182-503 AND -504. DELETED BACB310MDS-19 AND ADDED BACB307MDS-19. REVISED 4-5154-145 TO ADD OP NOTE. REVISED 4-5154-186 TO ADD GA NOTE. REVISED FL 4, 22, 27, 29, 48 AND 525 AND REVISED GN 99 AND CN 569. THE ABOVE REVISIONS TO CORRECT APL CONVERSION ERRORS, CHANGE EFF C-135 (ED0057) DESIGN GROUP K. ZIEGLER, PROD INFO - DRAWING CLARIFICATION ONLY - PARTS NOT AFFECTED. PLANNING - D. MIGHTSMAN (N.A.R.) 1-13-82	1-13-82		PR0405-9500

BOEING MILITARY AIRPLANE COMPANY

PARTS USAGE INDEX
(AUTOMATED ONLY)

LISTS ALL PART NUMBERS (IN MILITARY ORDER)
AND THEIR NEXT ASSY DASH NUMBER(S)

AUTOMATED

PARTS LIST		BOEING		MILITARY AIRPLANE COMPANY A DIVISION OF THE BOEING COMPANY 3801 S. CLIFTON WICHITA, KANSAS 67219		FSCN 62918	REV DATE 83-08-19	PL 35-33178	REV LTR C
LIST TITLE	SPLICE INSTL-INSPAR WING, BBL 70.50 MOD	GROUP STRUCTURE	DATE	CLASS	CHG CONTROL NUMBER	SH 152	OF 152		
REV SYM	DESCRIPTION OF CHANGE								
B	DCN CHANGES - APL ANALYST INITIATED CHANGE REVISED APPLICATION LIST TO DELETE PRODUCTION EFFECTIVITY AND ADD UNKNOWN TO ELIMINATE DOUBLE PART REQUIREMENTS CHANGE INITIATED BY DCN B ON 35-33100-535, 35-33100-536, 15-33100-517 CHANGE EFF - C-135 (E0405) PROD. DESIGN GROUP - R. JOHNSON 261-5967 PROD INFO - DRAWING CLARIFICATION ONLY - PARTS NOT AFFECTED. PLANNING - 2521 - B. JONES 6/4/82		6-8-82		PRR0405-9500				
C	DCN CHANGES - INCORPORATE COMMITTED CHANGE - TO ADD INTERCONNECT SPACER TO HUBBER 6 BLADDER CELL ADDED -561 TO APPLICATION LIST. CHANGE EFF - C-135 (E0488) K23419-5723. DESIGN GROUP - R. JOHNSON 261-6019. PLANNING - C. HOLLAND 266-7314		8-19-83		ECR0488				
***** PARTS USAGE INDEX *****									
PART NUMBER	USED ON PART NUMBER(S)								
-1	-102, -2								
-101	-1, -101, -102, -2								
-102	-1, -101, -102, -2								
-13	-1, -101, -102, -2								
-14	-1, -101, -102, -2								
-15	-1, -101, -102, -2								
-16	-1, -101, -102, -2								
-17	-1, -101, -102, -2								
-18	-1, -101, -102, -2								
-19	-1, -101								
-20	-102, -2								
-21	-1, -101, -567								
-22	-102, -2, -568								
-23	-1, -101, -567								
-24	-102, -2, -568								
-25	-1, -101, -567								
-26	-102, -2, -568								
-27	-1, -101, -567								
-28	-102, -2, -568								
-29	-1, -101								
-30	-102, -2								
-31	-1, -101								
-32	-102, -2								
-33	-1, -101, -102, -2								
-34	-1, -101, -102, -2								
-35	-1, -101, -102, -2								

49003-14 (20)

BOEING MILITARY AIRPLANE COMPANY

ASSEMBLY BREAKDOWN LIST
LISTS ALL PRIME PARTS AND REFERENCE PARTS

AUTOMATED

PARTS LIST		BOEING		MILITARY AIRPLANE COMPANY A DIVISION OF THE BOEING COMPANY		FSCM	REV DATE	PL	REV AIR
TITLE		SPLICE INSTL-INSPAR WING, BBL 70.50 MOD		GROUP		021110	03-08-19	35-31128	C
		ASSEMBLY BREAKDOWN LIST		STRUCTURE			F34601-74-C-3023	CONTRACT NUMBER	SH 49 OF 152
QTY	PART OR IDENTIFYING NUMBER	NOMENCLATURE OR DESCRIPTION	NOTE CODE	REV	SYM				
-	-1	SPLICE INSTL	- OP -2 OPPOSITE -1						
			MD ZONE 2A7						
			FIN APPLY F-12.101 TO INDICATED AREA AFTER PEEN FORMING AND FASTENER INSTALLATION.						
			DRAWING PICTURE SHEET 2 AND 3						
-	-101	SPLICE INSTL	- OP -102 OPPOSITE -101						
			MD ZONE 2A7						
			FIN APPLY F-12.101 TO INDICATED AREA AFTER PEEN FORMING AND FASTENER INSTALLATION.						
			DRAWING PICTURE SHEET 2 AND 3						
-	-102	SPLICE INSTL	- OP -102 OPPOSITE -101						
			MD ZONE 2A7						
			FIN APPLY F-12.101 TO INDICATED AREA AFTER PEEN FORMING AND FASTENER INSTALLATION.						
			DRAWING PICTURE SHEET 2 AND 3						
-	-2	SPLICE INSTL	- OP -2 OPPOSITE -1						
			MD ZONE 2A7						
			FIN APPLY F-12.101 TO INDICATED AREA AFTER PEEN FORMING AND FASTENER INSTALLATION.						
			DRAWING PICTURE SHEET 2 AND 3						
-	-567	CHORD INSTL	- OP -568 OPPOSITE -567						
			DP FORMING AND FASTENER INSTALLATION.						
			DRAWING PICTURE SHEET 2 AND 3						
-	BACD3074	CHORD INSTL DESIGN DETAIL	- OP						
			DP -568 OPPOSITE -567						
-	D2-5600	PROCESS DOCUMENT	- OP						
-	D3-1959	PROCESS DOC	- OP						
-	D3-1953	PROCESS DOC	- OP						
-	D3-8343	PROCESS DOC	- OP						
-	D35-33178	FASTENER DIMENSION	- EN						
-	MILSTD130	MILITARY STANDARD	- EN						
-	32-2321	INSPECTION/FINISH	- EN						
-	35-33113	SEALING INDEX AND	- EN						
-	19-17217	RADIUS TREATMENT DMG	- EN						
-	9-66317	FASTENER FLUSHNESS	- EN						
-	BAC5804	PROCESS SPEC	- EN						
-	BAC5805	PROCESS SPEC	- EN						
-	BAC5809	PROCESS SPEC	- EN						
-	BAC2947	PROCESS SPEC	- EN						
-	BAC3117	PROCESS SPEC	- EN						
-	BAC3300	PROCESS SPEC	- EN						
-	BAC3423	PROCESS SPEC	- EN						
-	BAC3439	PROCESS SPEC	- EN						
-	BAC5602	PROCESS SPEC	- EN						
-	BAC5963	PROCESS SPEC	- EN						

BOEING MILITARY AIRPLANE COMPANY

PARTS LIST

MANUFACTURING DATA (MD)

THE APL SYSTEM CATEGORIZES

- ZONE, STOCK SIZE, MATERIAL
- HEAT TREAT, FINISH AND PART MARK

AUTOMATED

PARTS LIST		BOEING		MILITARY AIRPLANE COMPANY A DIVISION OF THE BOEING COMPANY 3801 S. GILVER MICHIGAN KANSAS CITY		FCM	REV. DATE	PL	CONTRACT NUMBER	REV. LTR
LIST TITLE	SPICE INSTL-INSPAR WING, BPL 70.50 MOD	GROUP	STRUCTURE	82918	83-08-19	F34801-74-C-3023	51	51	C	
QTY	PART OR IDENTIFYING NUMBER	DESCRIPTION OR	INSTL	NOTE	CODE	-1 (CONTINUED FROM PRECEDING PAGE)				
1	-27	SPICE PLATE-EXT	GB			2024-0 PLATE PER QQ-A-250/4 HI TR T42 PENETRANT INSPECT MACHINED SURFACES PER BAC5423				
			OP			-28 OPPOSITE -27 ZONE 7C10 PT MK R FIN F-2.16				
			MD			STOCK .312X7.0X50.0 2024-0 PLATE PER QQ-A-250/4				
1	-29	SPICE PLATE-EXT	GB			HI TR T42 PENETRANT INSPECT MACHINED SURFACES PER BAC5423				
			OP			-10 OPPOSITE -29 ZONE 5A12 PT MK R FIN F-2.16				
			MD			STOCK .300X7.0X17.0 2024-0 PLATE PER QQ-A-250/4				
			SU			HI TR T42 -29 SUBSTITUTE FOR -579				
			GA			SUBSTITUTE PART				
			GB			PENETRANT INSPECT MACHINED SURFACES PER BAC5423				
			OP			-4 OP -3				
1	-3	CHORD-LWR L.H.	MD			ZONE 10A7 PT MK RF FIN FINISH AS INDICATED IN SECT 1C4 ZONE B1. SH 10. STOCK ALTER BAC1528-2104. 225.0 LONG INCLUDES 12.0 EXCESS ON EACH END AND .29 EXCESS ON ALL THICKNESSES 7175-0 EXTRUSION PER SWS-7-244. FORM TO CONTIGUR PER MD1 120287, 120589, 120590 AND 120592. HI TR T42				
			GA			ULTRASONIC INSPECT PER BAC5439 CLASS B				
			GB			PENETRANT INSPECT MACHINED SURFACES PER BAC5423				
			OP			-34 OPPOSITE -33				
			MD			ZONE 5A13 PT MK R				
			GE			FIN RESTORE FINISH ON SALVAGED PARTS PER 32-2321-11 TAKE -33, -34 OPPOSITE FROM SALVAGER 5-22747-1 OR -2 BY TRIMMING OFF SKIN FLANGE AS NOTED IN SECTION B11				
1	-33	SPICE PLATE-F.S.	GA			ZONE A13 SHEET 5 MAKE FROM BAC540822830F				
			MD			MAKE FROM BAC540822830F				
			GA			ZONE 5B11 PT MK R				
			GA			USE IF AND AS REQUIRED. REMOVE LAMINATIONS AS REQUIRED FOR .005 MAX PULL DOWN.				
1	-35	SHIM F.S. WEB	MF			ZONE 6E3 PT MK R				
			MD			STOCK .249X2.4X3.6				
			GA			2024-0 SH PER QQ-A-250/5				
			MD			ZONE 6A3 PT MK RF				
1	-36	SHIM F.S. WEB	MF			ZONE 6E3 PT MK R				
			MD			STOCK .249X2.4X3.6				
			GA			2024-0 SH PER QQ-A-250/5				
1	-37	FILLER-RADIUS	MD			ZONE 6E3 PT MK R				
			MD			STOCK .249X2.4X3.6				
			GA			2024-0 SH PER QQ-A-250/5				
1	-38	SHIM-STIF 2	MD			ZONE 6A3 PT MK RF				
			MD			STOCK .249X2.4X3.6				
			GA			2024-0 SH PER QQ-A-250/5				

INSTL -1 (CONTINUED ON NEXT PAGE)

610023-175

AUTOMATED

PARTS LIST		BOEING		MILITARY AIRPLANE COMPANY A DIVISION OF THE BOEING COMPANY 3601 L. AVENUE WHEELING, MARYLAND 21151		FSCM 82918	REV DATE 83-08-19	PL 35-33178	REV LIN C
LIST TITLE	SPLICE INSTL-INSPAR WING, BBL 70.50 MOD			GROUP STRUCTURE	F34601-76-C-1023	CONTRACT NUMBER		SH 52 OF 152 SH	
QTY REQD	PART OR IDENTIFYING NUMBER	NOMENCLATURE OR DESCRIPTION	INSTL CODE	-1 (CONTINUED FROM PRECEDING PAGE) NOTE NOTES					REV SYM
1	-40	SHIM-STIF 2	- MD	GA STOCK ALTER BAC1534-62(2.2X7.1) USE IF AND AS REQUIRED. REMOVE LAMINATIONS AS REQUIRED FOR .005 MAX PULL DOWN. ZONE 8B3 PT MK RF					
2	-41	SPLICE PLATE,	- EN	GA STOCK ALTER BAC1534-62(2.2X7.1) USE IF AND AS REQUIRED. REMOVE LAMINATIONS AS REQUIRED FOR .005 MAX PULL DOWN. S-1A, S-3A PT MK R					
1	-42	SPLICE PLATE, S-2A	- MD	STOCK 224X3.5X6.9 ZONE 8D5 PT MK R					
2	-44	SPLICE PLATE,	- EN	STOCK 224X3.5X6.6 ZONE 8D6 PT MK R					
1	-45	SPLICE PLATE, S-3A	- MD	STOCK 224X3.2X6.0 ZONE 8D9 PT MK R					
3	-46	SPLICE PLATE, S-10,	- EN	STOCK 224X3.2X6.0 ZONE 8D10 PT MK R					
3	-47	SPLICE PLATE, S-14A	- EN	STOCK 180X2.8X5.2 ZONE 2D13 PT MK R					
6	-48	SPLICE PLATE, S-18A,	- EN	STOCK 140X2.5X4.3 ZONE 9D4 PT MK R					
1	-49	SPLICE PLATE, S-1B	- MD	STOCK 140X2.5X4.3 ZONE 8C4 PT MK RF					
1	-5	ANGLE R.S. SEAL	- OP	STOCK 224X3.5X8.4 ZONE 2A3 PT MK RF					
1	-50	SPLICE PLATE, S-3B	- MD	STOCK 125X5.0X6.2 ZONE 8C6 PT MK RF					
-6 OPPOSITE -5 FIN F-2.21 AND APPLY MIL-C-27725 COATING PER D3-8543 STOCK 2025-0.5H PER QQ-A-250/5 HITR 112 PENETRANT INSPECT MACHINED SURFACES PER BAC5423 FIN F-2.21 AND APPLY MIL-C-27725 COATING PER D3-8543 INSTL -1 (CONTINUED ON NEXT PAGE)									

PARTS LIST NOTES

- OPPOSITE
- MAKE FROM
- GENERAL INFORMATION

AUTOMATED

PARTS LIST		BOEING		MILITARY AIRPLANE COMPANY A DIVISION OF THE BOEING COMPANY 3815 OLIVER WICHITA, KANSAS 67218		FCM	REV DATE	PL	REV LTR	
LIST TITLE	SPLICE INSTL-INSPAR WING, BBL 70.50 MOD			82918	83-08-19	35-33178	SH 51	OF	C	
QTY REQD	PART OR IDENTIFYING NUMBER	NONCPLATURE OR DESCRIPTION	INSTL CODE	NOTE	GROUP	CONTRACT NUMBER	SH 152	OF	REV	
					STRUCTURE	F34601-74-C-3023			SYM	
1	-27	SPLICE PLATE-EXT	-OP MD	2024-0 PLATE PER QQ-A-250/4 HT TR 142 PENETRANT INSPECT MACHINED SURFACES PER BAC5423 ZONE 28 OPPOSITE -27 ZONE 7C10 STOCK .312X7.0X50.0 2024-0 PLATE PER QQ-A-250/4 HT TR 142						
1	-29	SPLICE PLATE-EXT	-OP MD	2024-0 PLATE PER QQ-A-250/4 HT TR 142 PENETRANT INSPECT MACHINED SURFACES PER BAC5423 ZONE 5A12 STOCK .500X7.0X17.0 2024-0 PLATE PER QQ-A-250/4 HT TR 142						
1	-3	CHORD-LWR L.H.	-OP MD	2024-0 PLATE PER QQ-A-250/4 HT TR 142 PENETRANT INSPECT MACHINED SURFACES PER BAC5423 ZONE 10R7 PT MK R F FIN FINISH AS INDICATED IN SECT 1C5 ZONE B1, SH 10. STOCK ALTER BAC1520-2104, 220.0 LONG INCLUDES 12.0 EXCESS ON EACH END AND .20 EXCESS ON ALL THICKNESS 7175-0 EXTRUSION PER BMS-7-244. FORM TO CONTOUR PER MDI 120587, 120589, 120590 AND 120592. HT TR 175 ULTRASONIC INSPECT PER BAC5439 CLASS B PENETRANT INSPECT MACHINED SURFACES PER BAC5423 ZONE 33, 4 OPPOSITE -33 PT MK R FIN RESTORE FINISH ON SALVAGED PARTS PER 32-2321-11 MAKE 3, 33, 4 OPP (WHICHEVER IS INSTALLED) SPLICE ANGLE B1 TRIMMING OFF SKIN FLANGE AS NOTED IN SECTION B11 ZONE A13 SHEET 5. MAKE FROM BAC540R22B30F PT MK R ZONE 5B11 PT MK R USE IF AND AS REQUIRED. REMOVE LAMINATIONS AS REQUIRED FOR .005 MAX PULL DOWN. MAKE FROM BAC540R25B50F PT MK R ZONE 5B11 PT MK R USE IF AND AS REQUIRED. REMOVE LAMINATIONS AS REQUIRED FOR .005 MAX PULL DOWN. ZONE 6B3 PT MK R STOCK 249X2.4X3.8 2024-0 SH PER QQ-A-250/5 ZONE 6A3 PT MK R F INSTL -1 (CONTINUED ON NEXT PAGE)						
1	-33	SPLICE PLATE-F.S.	-OP MD	2024-0 PLATE PER QQ-A-250/4 HT TR 142 PENETRANT INSPECT MACHINED SURFACES PER BAC5423 ZONE 5A13 PT MK R FIN RESTORE FINISH ON SALVAGED PARTS PER 32-2321-11 MAKE 3, 33, 4 OPP (WHICHEVER IS INSTALLED) SPLICE ANGLE B1 TRIMMING OFF SKIN FLANGE AS NOTED IN SECTION B11 ZONE A13 SHEET 5. MAKE FROM BAC540R22B30F PT MK R ZONE 5B11 PT MK R USE IF AND AS REQUIRED. REMOVE LAMINATIONS AS REQUIRED FOR .005 MAX PULL DOWN. MAKE FROM BAC540R25B50F PT MK R ZONE 5B11 PT MK R USE IF AND AS REQUIRED. REMOVE LAMINATIONS AS REQUIRED FOR .005 MAX PULL DOWN. ZONE 6B3 PT MK R STOCK 249X2.4X3.8 2024-0 SH PER QQ-A-250/5 ZONE 6A3 PT MK R F INSTL -1 (CONTINUED ON NEXT PAGE)						
1	-35	SHIM F.S. WEB	-MF MD	2024-0 SH PER QQ-A-250/5 ZONE 6A3 PT MK R F INSTL -1 (CONTINUED ON NEXT PAGE)						
1	-36	SHIM F.S. WEB	-MF MD	2024-0 SH PER QQ-A-250/5 ZONE 6A3 PT MK R F INSTL -1 (CONTINUED ON NEXT PAGE)						
1	-37	FILLER-RADIUS	-MD	2024-0 SH PER QQ-A-250/5 ZONE 6A3 PT MK R F INSTL -1 (CONTINUED ON NEXT PAGE)						
1	-38	SHIM-STIF 2	-MD	2024-0 SH PER QQ-A-250/5 ZONE 6A3 PT MK R F INSTL -1 (CONTINUED ON NEXT PAGE)						

28

AUTOMATED

PARTS LIST		BOEING		MILITARY AIRPLANE COMPANY A DIVISION OF THE BOEING COMPANY 3801 S. OLIVER WICHITA, KANSAS 67218		FORM 82918	REV DATE 83-08-19	PL 35-11178	REV LTR C
LIST TITLE	SPLICE INSTL-INSPAR WING, DBL 70.50 MOD	GROUP STRUCTURE	CONTRACT NUMBER F34601-74-C-3023	SH 110 OF 152	REV SYM				
QTY READ	PART OR IDENTIFYING NUMBER	NOMENCLATURE OR DESCRIPTION	INSTL NOTE CODE	(CONTINUED FROM PRECEDING PAGE)					
1	-26	SPLICE PLATE EXT	GB -26 OPPOSITE -25 MD ZONE 5A5 STOCK .375X7.8X55.2 2024-0 PLATE PER Q0-A-250/4 HT TR 142	HT TR 142 PENETRANT INSPECT MACHINED SURFACES PER BACS423 PT MK R FIN F-2.16					
1	-28	SPLICE PLATE-EXT	GB -28 OPPOSITE -27 MD ZONE 7C10 STOCK .312X7.0X30.0 2024-0 PLATE PER Q0-A-250/4 HT TR 142	HT TR 142 PENETRANT INSPECT MACHINED SURFACES PER BACS423 PT MK R FIN F-2.16					
1	-30	SPLICE PLATE-EXT	GB -30 OPPOSITE -29 MD ZONE 5A12 STOCK .500X7.0X17.0 2024-0 PLATE PER Q0-A-250/4 HT TR 142	HT TR 142 PENETRANT INSPECT MACHINED SURFACES PER BACS423 PT MK R FIN F-2.16					
1	-34	SPLICE PLATE-F.S.	SU -30 SUBSTITUTE FOR -580 GA PENETRANT INSPECT MACHINED SURFACES PER BACS423 MD -34 OPPOSITE -33 GE	FIN RESTORE FINISH ON SALVAGED PARTS PER 32-2321-11 MAKE -33, -34 OPPOSITE FROM SALVAGED 5-85747-1 OR -2 OP -33, -4 OP (WHICHEVER IS INSTALLED) SPLICE ANGLE BY TRIMMING OFF SKIN FLANGE AS NOTED IN SECTION B11 ZONE A13 SHEET 5. PT MK R					
1	-35	SHIM F.S. WEB	MF -35 MD ZONE 5B11 PT MK R	MAKE FROM BACS40R22830F PT MK R					
1	-36	SHIM F.S. WEB	MF -36 MD ZONE 5B11 PT MK R	MAKE FROM BACS40R25850F PT MK R					
1	-37	FILLER-RADIUS	MD -37 MD ZONE 6S3 PT MK R	USE IF AND AS REQUIRED. REMOVE LAMINATIONS AS REQUIRED FOR .005 MAX PULL DOWN. FIN F-2.16					
1	-38	SHIM-STIF 2	MD -38 GA	STOCK .249X2.4X3.8 2024-0 SH PER Q0-A-250/5 ZONE 6A3 PT MK R STOCK ALTER BACS34-62(2.2X7.1) USE IF AND AS REQUIRED. REMOVE LAMINATIONS AS REQUIRED FOR .005 MAX PULL DOWN.					
1	-4	CHORD-LWR R.H.	OP -4 MD ZONE 10A7 PT MK R	INSTL -2 (CONTINUED ON NEXT PAGE)					

61003-26 (29)

AUTOMATED

PARTS LIST		BOEING		MILITARY AIRPLANE COMPANY A DIVISION OF THE BOEING COMPANY 3801 S. OLIVER WICHITA KANSAS 67213		REV LTR
LIST	TITLE	ESCA	REV DATE	PL	CONTRACT NUMBER	C
		82918	83-08-19	35-33178	F34601-74-C-3023	
QTY	PART OR IDENTIFYING NUMBER	NOMENCLATURE OR DESCRIPTION	INSTL -1 (CONTINUED FROM PRECEDING PAGE)	REV	SH	OF
REQD			NOTE CODE	SYM	152	SH
30	-546	FILLER-TAPERED	MD ZONE 1A8 GA USE IF AND AS REQUIRED GD SPECIAL RADIUS EDGE TREATMENT PER 59-17217 - ME MAKE FROM BAC3105D6F6 MD ZONE 1A8 PT MK R	A		
25	-547	FILLER-TAPERED	GA USE IF AND AS REQUIRED - ME MAKE FROM BAC3105D7E7 MD ZONE 1A8 PT MK R	A		
10	-548	FILLER-TAPERED	GA USE IF AND AS REQUIRED - ME MAKE FROM BAC3102D8E8 MD ZONE 1A8 PT MK R	A		
10	-549	FILLER-TAPERED	GA USE IF AND AS REQUIRED - MP MAKE FROM BAC3105D9F9 MD ZONE 1A8 PT MK R	A		
5	-55	SPLICE PLATE, S-10B,	GA USE IF AND AS REQUIRED - EN S-11B, AND S-12B MD ZONE 9C4 FIN F-2-21 AND APPLY MIL-C-27725 COATING PER D3-6543 STOCK 180X2.7X6.2 7075-173	A		
6	-550	FILLER-TAPERED	- ME MAKE FROM BAC3104E1F11 MD ZONE 1A8 PT MK R	A		
1	-551	CLIP	GA USE IF AND AS REQUIRED - MD ZONE 6C11 PT MK R FIN F-2-21 AND APPLY MIL-C-27725 COATING PER D3-8543 STOCK AND1013-1403X.5 LONH 2024-T4 OR 2024-13511 PER Q9-A-200/3. PERMISSABLE TO MACHINE FROM 2024-T4 OR 2024-13511 EXTRUDED BAR PER Q9-A-200/3 OR 2024-T4 OR 2024-13511 BARE PLATE PER Q9-A-250/4. PENETRANT INSPECT PER BAC5423 AFTER MACHINING FROM STOCK. ZONE 5A12 PT MK R			
1	-552	SHIM-FRONT SPAR	- MD STOCK BAC1536-125 PT MK R - GA USE IF AND AS REQUIRED. REMOVE LAMINATIONS AS REQUIRED FOR .005 MAX PULL DOWN. ZONE 6A11 PT MK R FIN F-2-21 AND APPLY MIL-C-27725 COATING PER D3-8543 STOCK 200X1.5X1.5 2024-T351 PLATE PER Q9-A-250/4 560 OPPOSITE -559 ZONE 4B2 PT MK R FIN F-2-59 PLUS F-12.101 STOCK 1.125			
2	-557	FILLER	- MD 2024-T351 PLATE PER Q9-A-250/4 PENETRANT INSPECT MACHINED SURFACES PER BAC5423 S-17B, AND S-21B			
1	-559	SPLICE PLATE-R.S.	- OP 2024-T351 PLATE PER Q9-A-250/4 PT MK R			
3	-56	SPLICE PLATE, S-13B	- EN INSTL -1 (CONTINUED ON NEXT PAGE)			

61003-28
30

AUTOMATED

PARTS LIST		BOEING		MILITARY AIRPLANE COMPANY A DIVISION OF THE BOEING COMPANY 3815 OLIVER WICHITA, KANSAS 67218		FSCN 82918	GROUP 83-08-19	REV. DATE E34601-74-C-3023	PL 35-33178	REV. LTR. C
LIST TITLE	SPLICE INSTL-INSPAR WING, BBL 70.50 MOD			STRUCTURE				CONTRACT NUMBER	SH 50 OF	
QTY REQD	PART OR IDENTIFYING NUMBER	NONECLAUSE OR DESCRIPTION	NOTE CODE	NOTE NOTES					SH 152	REV SYM
1	-1	SPLICE INSTL	- OP	-2 OPPOSITE -1 FIN APPLY F-12, 101 TO INDICATED AREA AFTER PEEN FORMING AND FASTENER INSTALLATION. DRAWING PICTURE SHEET 2 AND 3						
1	-13	FILLER-R.S. BACKING	DP	BOARD						
1	-14	SHIM-REAR SPAR	MD	ZONE 5A10 PT MK R FIN F-2.16 STOCK .190X1.2X2.4 ZONE 2A6 SH 99-A-250/5						
1	-15	SHIM-REAR SPAR	GA	STOCK ALTER BAC1534-33(3.1X6.0) REQUIRED FOR .005 MAX PULL DOWN. PT MK R						
1	-16	SHIM-FRONT SPAR	MD	STOCK ALTER BAC1533-33(3.8X5.5) REQUIRED FOR .005 MAX PULL DOWN. PT MK R						
12	-17	FILLER-INTERCONNECT	GD	REQUIRED FOR .005 MAX PULL DOWN. INSTALL SHIMS (AND FILERS) PER 32-2321-22. ZONE 2A2 PT MK P FIN F-2.16						
12	-18	SHIM INTERCONNECT	MF	STOCK .200X1.0X1.0 2024-13 CLAD SH 99-A-250/5 MAKE FROM BACS4GRI0B10F PT MK P						
1	-19	SPLICE PLATE EXT	OP	ZONE 4B2 PT MK R FIN F-2.16 STOCK 1.125X11.5X37.0 2024-0 PLATE PER 99-A-250/4						
1	-21	SPLICE PLATE EXT	GB	HT TR T42 PENETRANT INSPECT MACHINED SURFACES PER BAC5423 -52 OPPOSITE -21 PT MK R FIN F-2.16						
1	-23	SPLICE PLATE EXT	GB	STOCK .625X9.7X37.5 2024-0 PLATE PER 99-A-250/4 HT TR T42 PENETRANT INSPECT MACHINED SURFACES PER BAC5423 -24 OPPOSITE -23 PT MK R FIN F-2.16						
1	-25	SPLICE PLATE EXT	GB	STOCK .625X8.8X50.5 2024-0 PLATE PER 99-A-250/4 HT TR T42 PENETRANT INSPECT MACHINED SURFACES PER BAC5423 -26 OPPOSITE -25 PT MK R FIN F-2.16						
INSTL -1 (CONTINUED ON NEXT PAGE)										

SUBSTITUTE CALLOUT

- SUBSTITUTIONS ARE ALLOWED ONLY WHERE INTER-CHANGEABILITY UNDER ALL CONDITIONS FOR THE PARTICULAR APPLICATION IS ACCEPTABLE
- SUBSTITUTIONS MAY NOT BE LIMITED TO SPECIFIC UNITS
- THE SUBSTITUTE PART AND THE PREFERRED PART SHALL BE SHOWN IN THE PARTS LIST OF THE NEXT HIGHER ASSY
- SU NOTE TEXT WILL SHOW "SUBSTITUTE FOR" INDICATING THAT THE LATTER PART IS PREFERRED
 - SU NOTE SHALL BE APPLIED TO BOTH THE SUBSTITUTE AND THE PREFERRED PART

AUTOMATED

PARTS LIST		BOEING		MILITARY AIRPLANE COMPANY A DIVISION OF THE BOEING COMPANY 3801 S. OLIVER WICHITA, KANSAS 67218		FCGM 82918	REV DATE 83-08-19	PL 35-33176	REV. LTR. C
LIST	SPLICE INSTL-INSPAR WING, BBL 70.58 MOD			GROUP STRUCTURE	CONTRACT NUMBER F34601-74-C-3023			SH 55 152	OF SH
QTY REQD	PART OR IDENTIFYING NUMBER	NOMENCLATURE OR DESCRIPTION	INSTL CODE	(CONTINUED FROM PRECEDING PAGE)					
2	-561	RADIUS FILLER	- MD	ZONE 6C12 PT MK RF FIN F-2.21 AND APPLY MIL-C-27725 COATING PER D3-8543 STOCK .180X3.1X7.1 7075-173					
1	-563	SHIM	- MF	ZONE 2A1 PT MK R FIN F-2.21 AND APPLY MIL-C-27725 COATING PER D3-8543 STOCK .125X.75X1.00 7075-16					
1	-564	SHIM	- MF	MAKE FROM BACS40R23C68F ZONE 6C3 PT MK R USE IF AND AS REQUIRED. REMOVE LAMINATIONS AS REQUIRED FOR .005 MAX PULL DOWN. MAKE FROM BACS40R25C45F ZONE 6C12 PT MK R USE IF AND AS REQUIRED. REMOVE LAMINATIONS AS REQUIRED FOR .005 MAX PULL DOWN.					
2	-565	RADIUS FILLER	- MD	ZONE 7B12 PT MK R FIN APPLY F-12.101 TO INDICATED AREA AFTER PEEN FORMING AND FASTENER INSTALLATION. STOCK .200X1.0X1.0 7075-173					
12	-569	FILLER-TAPERED	- MF	MAKE FROM BACS3105D8F5 ZONE 1A8 PT MK R USE IF AND AS REQUIRED 5-158, AND 5-168					
3	-57	SPLICE PLATE, S-14B,	- EN	ZONE 9C6 PT MK RF FIN F-2.21 AND APPLY MIL-C-27725 COATING PER D3-8543 STOCK .140X2.7X6.2 7075-173					
1	-570	SPLICE PLATE,S-4A	- MD	ZONE 8D7 PT MK R FIN F-2.16 STOCK .300X3.8X6.1 7075-173					
1	-571	ASSY ANGLE	- OP	-572 OPPOSITE -571 ZONE 8D6 PT MK R					
4	-575	TAPERED FILLER	- MF	MAKE FROM BACS3106L-12-12 ZONE 6C2 PT MK R MAKE FROM BACS3106L-12-12 ZONE 8B2 PT MK R MAKE FROM BACS3108G9F09 ZONE 6E3 PT MK R -550 OPPOSITE -579 ZONE 5A12 PT MK R FIN F-2.16 STOCK .500X7.0X17.0 2024-0 PLATE PER QQ-A-250/4 HI TR 142					
1	-577	TAPERED FILLER	- MF						
2	-577	TAPERED FILLER	- MF						
1	-579	SPLICE PLATE-EXT	- OP						
1	-579	SPLICE PLATE-EXT	- MD						

INSTL SU-1 (CONTINUED ON NEXT PAGE)

-29 SUBSTITUTE FOR -579



AUTOMATED

LIST TITLE	PARTS LIST	BOEING	DESIGN AND DRAWING CONTROL	FSCN	REV DATE	PL	REV LTR
SPICE INSTL-INSPAR WING, BBL 70.50 MOD			A DIVISION OF BOEING COMPANY 3801 S OLIVER WICHITA, KANSAS 67218	82918	83-08-19	35-33178	C
			GROUP	STRUCTURE	CONTRACT NUMBER	SH	REV
					F34601-74-C-1023	51	OF
						152	SH

QTY RECD	PART OR IDENTIFYING NUMBER	NOMENCLATURE OR DESCRIPTION	INSTL CODE	NOTE	REV
1	-27	SPICE PLATE-EXT	QB	2025-00 PLATE PER QQ-A-250/4	SYH
			QB	HT TR T42 PENETRANT INSPECT MACHINED SURFACES PER BAC5423	
			MD	ZONE 7010 PT MK R FIN F-2.16	
			MD	STOCK .312X7.0X50.0	
			MD	2024-00 PLATE PER QQ-A-250/4	
1	-29	SPICE PLATE-EXT	QB	HT TR T42 PENETRANT INSPECT MACHINED SURFACES PER BAC5423	
			MD	ZONE 5A12 PT MK R FIN F-2.16	
			MD	STOCK .500X7.0X17.0	
			MD	2024-00 PLATE PER QQ-A-250/4	
			MD	HT TR T42	
			SU	-29 SUBSTITUTE FOR -579	
			QB	STOCK	
			QB	PENETRANT INSPECT MACHINED SURFACES PER BAC5423	
			MD	ZONE 10A7 PT MK RF	
			MD	4.00 PT -3	
1	-3	CHORD-LMR L.H.	QB	FIN FINISH AS INDICATED IN SECT 1G, ZONE B1, SH 10.	
			MD	STOCK ALTER BAC1520-2104, 220.0 LONG INCLUDES 12.0 EXCESS ON EACH END AND .20 EXCESS ON ALL THICKNESS	
			MD	7175-0 EXTRUSION PER SMS-7-244. FORM TO CONTOUR PER MDI 120587, 120589, 120590 AND 120592.	
			MD	HT TR T75	
			GA	ULTRASONIC INSPECT PER BAC5439 CLASS B	
			QB	PENETRANT INSPECT MACHINED SURFACES PER BAC5423	
			MD	-34 OPPOSITE -33	
			GE	FIN RESTORE FINISH ON SALVAGED PARTS PER 32-2121-11	
			MD	MAKE UP .005 MAX PULL DOWN.	
			MD	OP .3, .33, .4 OP (WHICHEVER IS INSTALLED) SPICE ANGLE BY TRIMMING OFF SKIN FLANGE AS NOTED IN SECTION B11	
			MD	ZONE A13 SHEET 3.	
			MD	MAKE FROM BAC540R2230F	
			MD	ZONE 5B11 PT MK R	
			MD	USE IF AND AS REQUIRED. REMOVE LAMINATIONS AS REQUIRED FOR .005 MAX PULL DOWN.	
			MD	MAKE FROM BAC540R25850F	
			MD	ZONE 5B11 PT MK R	
			MD	USE IF AND AS REQUIRED. REMOVE LAMINATIONS AS REQUIRED FOR .005 MAX PULL DOWN.	
			MD	ZONE 6B3 PT MK R	
			MD	STOCK 249X2.4X3.6	
			MD	2025-00 SH PER QQ-A-250/5	
			MD	PT MK RF	
			MD	ZONE 6A13	
1	-38	SHIM-STIF 2	MD	INSTL -1 (CONTINUED ON NEXT PAGE)	

61003-3 (34)

BOEING MILITARY AIRPLANE COMPANY

SALVAGE LIST

COLLECTS ALL PARTS SALVAGED FOR EACH ASSY

AUTOMATED

PARTS LIST		BOEING		MILITARY AIRPLANE COMPANY A DIVISION OF THE BOEING COMPANY 3601 5 AVENUE, WASHINGTON, WASHINGTON 20008		FSC#	REV DATE	PL	REV LTR
LIST	TITLE	SPLICE INSTL-INSPAR WING, B3L 70.50 MOD		82918	GROUP	83-08-19	CONTRACT NUMBER	55-31178	C
QTY REQD	PART OR IDENTIFYING NUMBER	NOMENCLATURE OR DESCRIPTION	INSTL	NOTE CODE	STRUCTURE			SH	REV OF
								69	SH
1	9-63390-5	SHIM	- DF	DELETE FROM 4-5165					
1	9-63390-6	SHIM	- DF	DELETE FROM 4-5165					
1	9-63390-7	SHIM	- DF	DELETE FROM 4-5165					
1	9-63390-8	SHIM	- DF	DELETE FROM 4-5165					
1	9-63390-9	SHIM	- DF	DELETE FROM 4-5165					
THE FOLLOWING PARTS ARE TO BE SALVAGED									
2	5-98705-2	FILLER	- SF	SALVAGE FROM 4-5154					
1	4-5154-82	SPLICE PLATE	- OP	3-98705-2 OPPOSITE 3-98705-1					
1	4-5154-89	FILLER	- OP	4-5154-159 OPPOSITE 4-5154-82					
1	4-5154-91	FILLER	- SF	FIN RESTORE FINISH ON SALVAGED PARTS PER 32-2321-11					
1	5-88747-1	SPLICE ANGLE-	- SF	FIN RESTORE PROTECTIVE FINISH ON SALVAGED ALUMINUM PARTS PER 32-2321-23					
THE FOLLOWING PARTS ARE TO BE SALVAGED									
1	5-88747-3	SPLICE ANGLE-	- EN	FIN RESTORE FINISH ON SALVAGED PARTS PER 32-2321-11					
1	6-74142-1	ANGLE ASSY	- SF	SALVAGE FROM 4-5165					
1	6-74142-5	ANGLE ASSY	- OP	3-98705-2 OPPOSITE 3-98705-1					
1	6-74171-1	ANGLE ASSY	- OP	4-5154-159 OPPOSITE 4-5154-82					
2	66-2917	SUPPORT TEE	- SF	FIN RESTORE FINISH ON SALVAGED PARTS PER 32-2321-11					

INSTL -1 (CONTINUED FROM PRECEDING PAGE)

INSTL -1 (CONTINUED ON NEXT PAGE)

DELETION LIST

COLLECTS ALL PARTS TO BE DELETED FOR EACH
ASSY/INSTL

AUTOMATED

PARTS LIST		BOEING		MILITARY AIRPLANE COMPANY A DIVISION OF THE BOEING COMPANY 3801 S OLIVER WICHITA KANSAS 67218		FCM 82918	REV DATE 83-08-19	PL 35-33178	REV LTR C	
LIST TITLE	SPICE INSTL-INSPAR WING, DBL 70.50 MOD	GROUP STRUCTURE	CONTRACT NUMBER F34601-74-C-3023	SH 46	OF 152					
QTY REQD	PART OR IDENTIFYING NUMBER	NONC DESCRIPTION	OR	INSTL CODE	-1 (CONTINUED FROM PRECEDING PAGE)					REV SYM
16	NAS1291-9	NUT		- JB	BE MEASURED WITH A TORQUE WRENCH. BACH10JC () OR NAS1291-() NUTS MAY BE SUBSTITUTED FOR BACH10GC () NUTS AT NO MORE THAN TWO (2) AND LOCATIONS EACH OF THE LOCATIONS INDICATED INBD AND LOCATIONS OUTBD OF DBL 70.5 (EACH STIFFENER LOCATION, STEP 1 THRU STEP 5), WHEN PHYSICAL INTERFERENCE PREVENTS INSTL OF BACH10GC () NUTS. NOTE - THIS SUBSTITUTION IS LIMITED TO A MAXIMUM OF EIGHTEEN (18) PER INSTL. TORQUE REQUIREMENTS FOR SUBSTITUTE NUTS ARE 370-430 INCH. POUNDS FOR 1/2 INCH SIZE AND 500-575 INCH POUNDS FOR 9/16 INCH SIZE. TORQUE MUST BE MEASURED WITH A TORQUE WRENCH.					
2	NAS1304-10	BOLT, PROTRUDING HEAD -		-						
2	NAS1304-11	BOLT, PROTRUDING HEAD -		-						
2	NAS1304-13	BOLT, PROTRUDING HEAD -		-						
4	NAS1304-27	BOLT, PROTRUDING HEAD -		-						
4	NAS1304-6	BOLT, PROTRUDING HEAD -		-						
6	NAS1304-9	BOLT, PROTRUDING HEAD -		-						
THE FOLLOWING PARTS ARE TO BE DELETED										
1	4-5154-105	SHIM		- DF	DELETE FROM 4-5154					
1	4-5154-107	SHIM		- DF	DELETE IF INSTALLED					
1	4-5154-131	SHIM		- DF	DELETE FROM 4-5154					
1	4-5154-134	SHIM		- DF	DELETE IF INSTALLED					
1	4-5154-137	CHORD		- DF	DELETE FROM 4-5154					
1	4-5154-141	SHIM		- DF	DELETE FROM 4-5154					
1	4-5154-143	SHIM		- DF	DELETE FROM 4-5154					
1	4-5154-145	CHORD		- DF	DELETE FROM 4-5154					
1	4-5154-148	SHIM		- DF	DELETE FROM 4-5154					
1	4-5154-155	SHIM		- DF	DELETE FROM 4-5154					
1	4-5154-160	SHIM		- DF	DELETE FROM 4-5154					
1	4-5154-161	SHIM		- DF	DELETE FROM 4-5154					
INSTL -1 (CONTINUED ON NEXT PAGE)										

FLAG NOTES - GENERAL NOTES

AUTOMATED

PARTS LIST		BOEING		MILITARY AIRPLANE COMPANY A DIVISION OF THE BOEING COMPANY 3601 S CENTER - MCKENZIE, KANSAS 67109		FSCM 02918	REV DATE 83-08-19	PL 35-33178	REV LTR C
LIST TITLE	SPlice INSTL-INSPAR WING, BBL 70.50 MOD			GROUP STRUCTURE	CONTRACT NUMBER F34601-74-C-3023	SH 146 SH 132	OF SH		
FLAG GEN NOTES (CONTINUED FROM PRECEDING PAGE)									

FL 22	VERTICAL WEB THICKNESS AS INDICATED EXCEPT IN AREAS OF PAD-UPS FOR CUTOUTS AND AT FASTENER 2. SEE VIEW C4, ZONE B2 AND VIEW A4 ZONE B7, SHEET 10.	A
FL 26	INSTALL SHIMS (AND FILLERS) PER 32-2321-22.	A
FL 29	SALVAGE ENTIRE INSTALLATION EXCEPT THOSE COMPONENTS SPECIFIED IN THE DELETION LIST. SHOT PEEN FROM INDICATED AREA PER D3-1159 PRIOR TO SECTION II FASTENER INSTL, EXCEPT 200 PERCENT MAX COVERAGE ALLOWED (SEE VIEW II, ZONE C3 SHEET 1 FOR MAX ALLOWABLE GAP BETWEEN EXTERNAL SPLICE PLATE AND SKIN) LAP AND PROTRUSION OF MATERIAL AT EDGES IS NOT ALLOWED. SURFACE ROUGHNESS MAY NOT EXCEED 250/100 REFINISH PER 32-2321-9.	A
FL 30	INSTALL 3AC-B10MB(-) () HEX DRIVE PROT HEAD BOLT WITH A BACN10GM-() NUT. FASTENER DIAMETER AND GRIP LENGTH AS NOTED AT FASTENER SYMBOL. USE APPROPRIATE NUT. SEE FASTENER TABLE I ON SHEET 5, ZONE C4.	A
FL 31	SHOT PEEN FADEOUT DISTANCE. REFINISH PER 32-2321-9 EXCEED 20 PERCENT COVERAGE IN AN EVEN DISTRIBUTION OF THE AREA. REFINISH PER 32-2321-9	A
FL 32	INSTALL BAG-B10FM-() () HEX-DRIVE CSK HEAD BOLT WITH A BACN10GM-() NUT. FASTENER DIAMETER AND GRIP LENGTH AS NOTED AT FASTENER SYMBOL. USE APPROPRIATE NUT AND WASHER. SEE FASTENER TABLE II ON SHEET 5, ZONE C4.	A
FL 33	THE CONTOUR BETWEEN BBL 70.5 AND BBL 72.50 HAS BEEN ASSUMED AS A STRAIGHT LINE IN SECTION CUTS 90 DEGREES TO BAL 70.5 CONTOUR. SEE SECT C10, ZONE C10, SHEET 1	A
FL 35	MAX PULL DOWN BETWEEN POINTS. SEE SECT C10, ZONE C10, SHEET 1 (CENTER PORTION OF RIB INSTALLATION - PAD/AFT DISTANCE) TO BE MEASURED IN THE UNRESTRAINED POSITION. ALL OTHER PULL DOWN MEASUREMENTS TO BE TAKEN AFTER THE MEASURED IN THE UNRESTRAINED POSITION. FLAG GEN NOTES (CONTINUED ON NEXT PAGE)	A

GN 23	JUST PRIOR TO INSTALLATION, APPLY CORROSION PROTECTION FAYING SURFACE SEAL BETWEEN INTERNAL AND EXTERNAL SPLICE PLATES AND THE WING SKIN PANELS AND RIB CHORDS. SEE VIEW II ZONE A3, SHEET 1 AND OTHER SHEETS OF THIS DMO.	A
GN 24	SPECIAL PRECAUTION EXTENSIVE PRE-ASSY SEALING IS REQUIRED DURING THIS ASSEMBLY/INSTALLATION. APPLY ALL SEALANT PER D3-1453.	A
GN 25	SPECIAL PRECAUTION NO HOLES OR CUTOUTS MAY BE MADE IN THIS STRUCTURE UNLESS SHOWN ON THIS DRAWING OR OTHER STRUCTURE DRAWINGS.	A
GN 38	SALVAGE FUEL SYSTEM PART PER 32-2321-19	A
GN 39	RESTORE FINISH REMOVED BY TRIMMING OR SPOTFACING PER 32-2321-9	A
GN 97	SPECIAL PRECAUTION - INSPECT ALL HOLES IN THE FRONT AND REAR SPAR TERMINAL FITTINGS (5-83003 AND 5-83004 REF) WHICH ARE IDENTIFIED BY EXISTING FASTENER SYMBOL PRIOR TO REINSTALLATION OF FASTENERS. EDDY CURRENT INSPECT PER 32-2321-17 EXCEPT THE 1.64 REAR PRIOR TO INSPECTION MAY BE MAIVED IF THE CONDITION OF THE HOLE DOES NOT DEGRADE INSPECTION RESULTS. OPTIONAL - EXISTING HOLES 7/16 DIA AND LARGER MAY BE PENETRANT INSPECTED PER BAC9423. SENSITIVITY LEVEL 4. IF PENETRANT INSPECT METHOD IS USED, DO NOT REAR PRIOR TO INSPECTION.	A
GN 99	SPECIAL PRECAUTION - VISUALLY INSPECT THE 5-83003 AND 5-83004 (REF) FOR CRACKS, GUGES, BUCKLES, SPECIAL AND CORROSION. VERIFY ALL SUSPECTED CRACKS BY PENETRANT INSPECTION PER BAC5423. REPORTING AND DISPOSITION OF DISCREPANCIES WILL BE IN ACCORDANCE WITH THE TERMS OF THE CONTRACT.	A

FLAG GEN NOTES (CONTINUED ON NEXT PAGE)

EXPLANATION OF NOTE SYMBOLS

- LISTS ALL NOTES USED IN EACH PARTS LIST
- DEFINES EACH NOTE CODE

AUTOMATED

PARTS LIST		BOEING		UNITED AIRL. INC. COASTAL A DIVISION OF THE BOEING COMPANY 3801 S. CLYDE WICHITA, KANSAS 67218		ESCM 82918	REV. DATE 83-08-19	PL 35-33178	REV. LTR. C
LIST	SPLICE INSTL-INSPAR WING, BBL 70.50 MOD	GROUP	STRUCTURE	CONTRACT NUMBER	F34601-74-C-3023	SH 151	OF		
TITLE						152	SH		

..... STANDARD DRAWING NOTES

DIMENSIONING AND TOLERANCING PER ANSI Y14.5.
FOR SYMBOL DESCRIPTION AND TOLERANCES SEE PICTURE SHEET.

.....
EXPLANATION OF NOTE SYMBOLS
.....

- DF DELETED FROM
- DN DRAWING NOTE
- DP DRAWING PICTURE SHEET
- EN EXTENDED NOMENCLATURE
- FL FLAGNOTE
- GA GENERAL INFORMATION
- GB GENERAL INFORMATION
- GD GENERAL INFORMATION
- GE GENERAL INFORMATION
- GN GENERAL INFORMATION
- JA GENERAL INFORMATION
- JB GENERAL INFORMATION
- JC GENERAL INFORMATION
- MD MANUFACTURING DATA
- MF MAKE FROM
- OP OPPOSITE PART
- SF SALVAGE FROM
- SU SUBSTITUTE NOTE
- VN VENDOR NUMBER
- VS VENDOR ITEM

PARTS LIST INDEX

- LISTS PAGE NUMBERS OF EACH SECTION
- LISTS PAGE NUMBER FOR EACH ASSY
AND/OR INSTL

AUTOMATED

PARTS LIST		BOEING		MILITARY AIRPLANE COMPANY A DIVISION OF THE BOEING COMPANY 3601 S. OLIVER, MICHIGAN, KANSAS 6710		FSCM 82918	REV DATE 83-08-19	PL 35-33178	REV LTR. C
LIST TITLE	SPlice INSTL-INSPAR WING, B9L 70.50 MOD			GROUP	STRUCTURE	CONTRACT NUMBER F34601-74-C-3023		SH 152 OF 152	SH
. PARTS LIST INDEX									
APPLICATION LIST					PAGE 0001				
REVISIONS					PAGE 0038				
PARTS USAGE INDEX					PAGE 0039				
ASSEMBLY BREAKDOWN LIST					PAGE 0049				
INSTL -1					PAGE 0070				
INSTL -101					PAGE 0089				
INSTL -102					PAGE 0109				
INSTL -2					PAGE 0129				
ASSY -503					PAGE 0150				
ASSY -505					PAGE 0150				
ASSY -506					PAGE 0150				
ASSY -507					PAGE 0151				
ASSY -508					PAGE 0151				
ASSY -509					PAGE 0151				
ASSY -510					PAGE 0132				
ASSY -511					PAGE 0132				
ASSY -512					PAGE 0136				
INSTL -357					PAGE 0141				
INSTL -568					PAGE 0141				
ASSY -571					PAGE 0141				
ASSY -572					PAGE 0142				
ASSY -584					PAGE 0151				
ASSY -585					PAGE 0151				
FLAGNOTE-GENERAL NOTES									
EXPLANATION OF NOTE SYMBOLS									

BOEING MILITARY AIRPLANE COMPANY

STANDARD DRAWING NOTES

.....

... STANDARD DRAWING NOTES ...

FOR SYMBOL DESCRIPTION AND TOLERANCES SEE PICTURE SHEET.

.....